

SELF CONTAINED BREATHING APPARATUS DEMO PROGRAM

THE ACTUAL SELF CONTAINED BREATHING APPARATUS TRAINING PROGRAM CONTAINS NEARLY 145 SLIDES WITH FULL SLIDE ANIMATIONS AND TAKES THREE HOURS TO PRESENT WITH A THREE HOUR PRACTICAL EVOLUTION

THIS IS A SMALL SAMPLE OF THE PROGRAM

FOR MORE INFORMATION OR TO PURCHASE THIS COMPLETE TRAINING PROGRAM, CONTACT:

**EMERGENCY TRAINING ASSOCIATES, LLC AT:
WWW.ETAEMERGENCYTRAINING.COM**

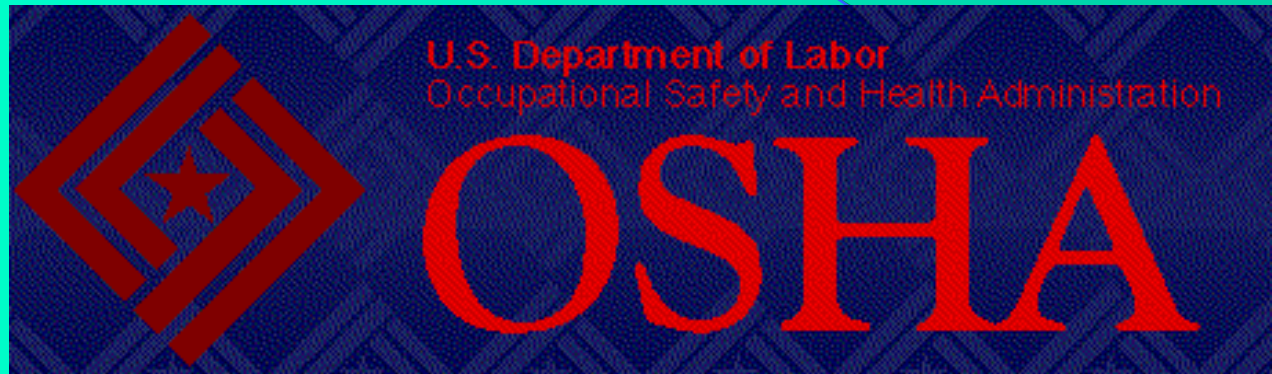
SELF CONTAINED BREATHING APPARATUS



CONFIDENCE PROGRAM

EMERGENCY TRAINING ASSOCIATES, LLC

INTRODUCTION



USE OF THE SCBA IS REGULATED BY
THE U.S. DEPARTMENT OF LABOR'S
OCCUPATIONAL SAFETY AND HEALTH
ADMINISTRATION...

INTRODUCTION



AND THE U.S. DEPARTMENT OF
LABOR'S MINE SAFETY AND HEALTH
ADMINISTRATION

GENERAL DESCRIPTION

THE S.C.B.A.
PROVIDES
RESPIRATORY
PROTECTION
WHEN WORKING
IN TOXIC OR
UNBREATHABLE
ATMOSPHERES



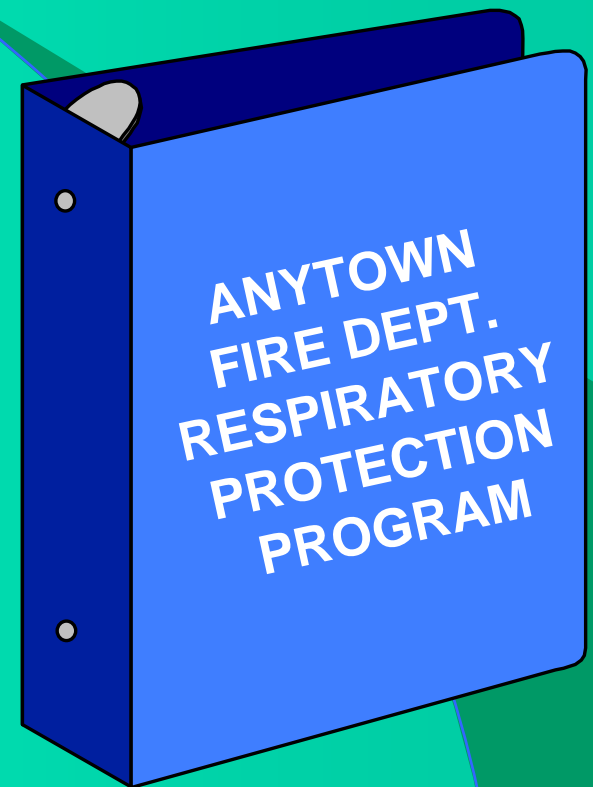
GENERAL DESCRIPTION

THE SCBA,
TOGETHER WITH
FULL FIREFIGHTING
CLOTHING, IS A
PART OF THE
FRAMEWORK OF
THE FIREFIGHTERS'
PERSONAL
PROTECTIVE
EQUIPMENT



WARNING

- THE SCBA SHOULD ONLY BE USED IN CONJUNCTION WITH AN APPROVED RESPIRATORY PROTECTION PROGRAM
- THE SCBA IS ONLY TO BE USED FOR THE *PURPOSE OUTLINED* IN YOUR RESPIRATORY PROTECTION PROGRAM



WARNING

**IMPROPER USE OF THE SCBA MAY
RESULT IN PERSONAL INJURY OR
DEATH IF:**

- **USED WITHOUT PROPER TRAINING**
- **DISREGARD OF INSTRUCTIONS**
- **DISREGARD OF WARNINGS**
- **FAILURE TO MAINTAIN THE UNIT**
- **FAILURE TO INSPECT THE UNIT**

EQUIPMENT LIMITATIONS

- LIMITED VISIBILITY
- DECREASED ABILITY TO COMMUNICATE



EQUIPMENT LIMITATIONS

- INCREASED WEIGHT
- AIR CAPACITY OF CYLINDER



EQUIPMENT LIMITATIONS



DECREASED
MOBILITY

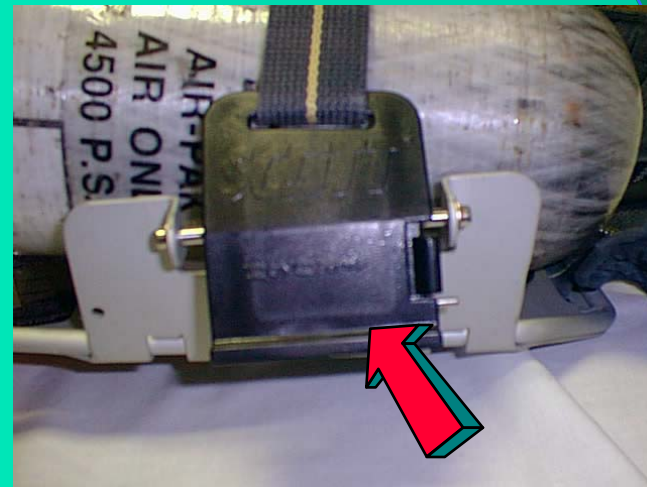
HARNES FRAME

THE HARNESS
FRAME IS THE
RIGID BASE TO
WHICH THE
HARNES
STRAPS AND
PRESSURE
REDUCER
ASSEMBLY ARE
ATTACHED



HARNES FRAME

ITS MAIN PURPOSE IS TO HOLD THE CYLINDER WHICH IS DONE BY MEANS OF AN ADJUSTABLE CYLINDER BAND AND A LOCKING TAB



HARNESS ASSEMBLY

THE HARNESS ASSEMBLY CONSISTS OF TWO ADJUSTABLE SHOULDER STRAPS AND AN ADJUSTABLE WAIST BELT WITH A QUICK RELEASE



HARNESSE ASSEMBLY

THIS WAIST BELT RESTS ON THE HIPS OF THE WEARER AND DISTRIBUTES MOST OF THE WEIGHT OF THE SCBA TO THAT AREA



HARNESS ASSEMBLY



THE SHOULDER STRAPS HAVE POCKETS THROUGH WHICH THE LOW PRESSURE HOSE AND THE REMOTE GAUGE LINE PASS

BREATHING AIR CYLINDER



PRESSURIZED TO
EITHER 2216,
3000, OR 4500 PSI,
THE CYLINDER
HOLDS PURIFIED
BREATHING AIR

AIR CYLINDER

- 30 MIN.- 2216 P.S.I. 45 CUBIC FT OF AIR
- 30 MIN.- 4500 P.S.I. 45 CUBIC FT OF AIR
- 45 MIN. – 3000 P.S.I. 66 CUBIC FT OF AIR
- 60 MIN. – 4500 P.S.I. 87 CUBIC FT OF AIR

BREATHING AIR CYLINDER

**FIBERGLASS
WRAPPING**

**ALUMINUM
SHELL**



**CYLINDERS ARE
CONSTRUCTED OF
AN ALUMINUM
SHELL AND ARE
WRAPPED WITH
LAYERS OF
FIBERGLASS,
WHICH
STRENGTHEN AND
PROTECT THE
SHELL**

BREATHING AIR CYLINDER



THE LOW WEIGHT
AND HIGH
PRESSURIZATION
OF THE
CYLINDER IS
DEPENDENT
UPON THE
ALUMINUM/
FIBERGLASS
COMPOSITION

EYEGLOSS HOLDER



USE
EYEGASSES
HELD IN THE
FACEPIECE
INSERT
WHENEVER
POSSIBLE

STORAGE OF CYLINDERS

SPARE
CYLINDERS
SHOULD BE
PLACED IN
HOLDERS WITH
THE VALVE STEM
AND HANDLE
PROTECTED
FROM DAMAGE



POSITIVE PRESSURE DEMAND REGULATOR



THIS DIFFERENCE IN PRESSURE IS MAINTAINED WHEN THE SEAL BETWEEN THE TWO ATMOSPHERES IS UNDISTURBED

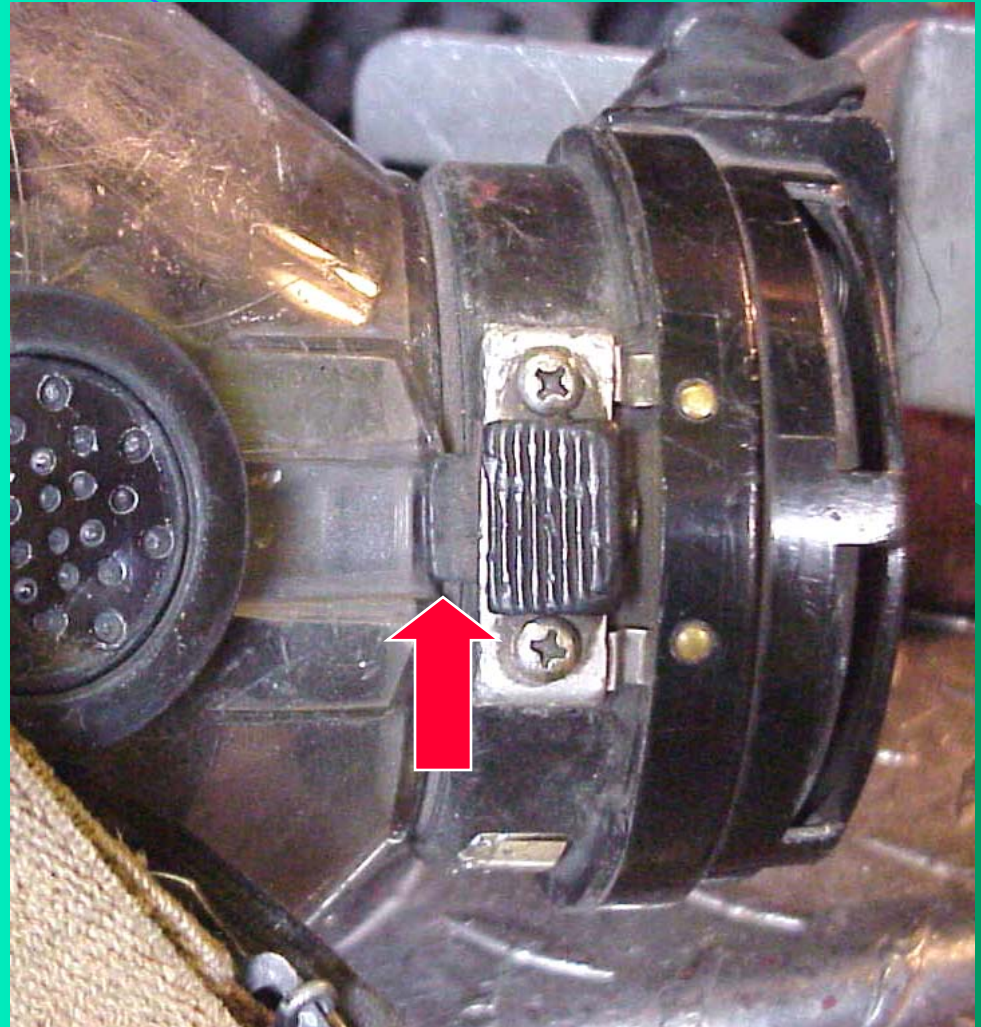
SNAP LOCK

A SPRING-LOADED SNAP LOCK IS LOCATED ON THE RIGHT SIDE OF THE REGULATOR ASSEMBLY



SNAP LOCK

THE
REGULATOR
INSERTS INTO
THE
FACEPIECE'S
MOLDED
GROOVE, AND IS
THEN ROTATED
UNTIL THE
LOCK SNAPS
INTO PLACE



VIRBRATING ALERT ALARM



THE VIRBRATING ALERT ALARM IS HOUSED WITHIN THE REGULATOR ASSEMBLY. THE ALARM GIVES WARNING BY BOTH AN AUDIBLE AND VIBRATING ACTION AROUND THE FACEPIECE



PURGE VALVE

WHEN THE
REGULATOR IS
CORRECTLY
POSITIONED
ON THE
FACEPIECE, A
STEM ON THE
PURGE VALVE
WILL POINT
UPWARDS IN
ITS NORMAL
MODE



EXHALATION VALVE

THE
EXHALATION
VALVE COVERS
THE FORWARD
PORTION OF
THE
REGULATOR
ASSEMBLY
AND IS
PROTECTED BY
A STAINLESS
STEEL SHIELD



FACEPIECE

THE FACEPIECE
IS A CONICAL
SHAPED LENS
THAT DIRECTS
AVAILABLE
LIGHT RAYS
TOWARD THE
EYES TO
AFFORD
MAXIMUM
VISION



REMOTE GAUGE



ATTACHED TO
THE RIGHT
SHOULDER
STRAP IS THE
REMOTE GAUGE,
WHICH IS
CONNECTED TO
THE PRA BY A
TUBE

EMERGENCY BREATHING PROCEDURES

- **SKIP BREATHING**
 - **FIREFIGHTER INHALES**
 - **HOLDS BREATH FOR AS LONG AS IT TAKES TO EXHALE**
 - **THEN EXHALES**
 - **REPEATS BREATHING PROCESS**
- **CUTS RESPIRATIONS IN HALF**

EMERGENCY BREATHING PROCEDURES

- CONTROLLED BREATHING:
- FIREFIGHTER CONSCIOUSLY SLOWS DOWN BREATHING
- INHALE THROUGH NOSE
EXHALE THROUGH MOUTH

APPARATUS TEST



END OF DEMO

FOR MORE INFORMATION OR TO
PURCHASE THIS COMPLETE
TRAINING PROGRAM, CONTACT:

**EMERGENCY TRAINING ASSOCIATES,
LLC AT:
WWW.ETAEMERGENCYTRAINING.COM**